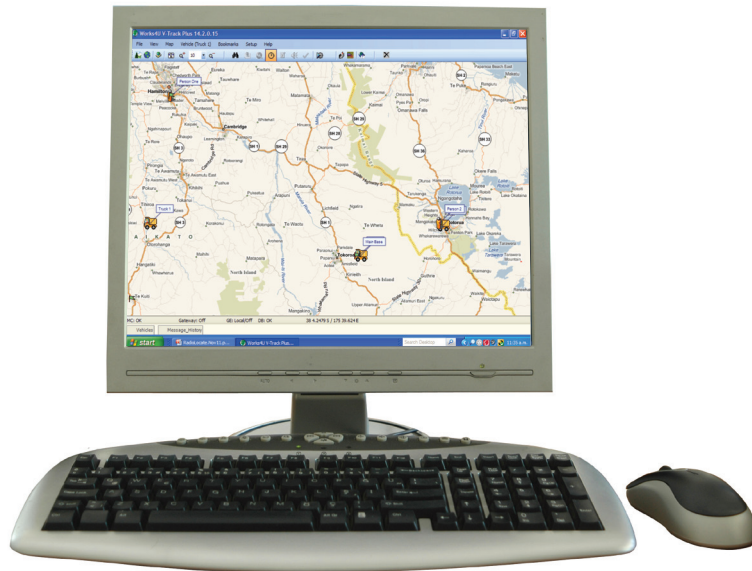


data
over radio



An easy to use
entry level
**RADIO
LOCATE
SYSTEM**
designed for
Digital/Analogue
radio field users

AFFORDABLE ENTRY LEVEL RADIO LOCATE SOFTWARE

A computer based location system allowing people and field users to be located and monitored across Digital and Analogue radio networks.

Radio Locate is a simple software application that works in conjunction with the latest Digital/Analogue radios to determine the location of a vehicle or a person in just seconds. An entry level solution, Radio Locate allows organisations with vehicles or people on foot to take advantage of GPS technology using Digital/Analogue conventional radio networks, which operate at a much lower cost than other wireless networks such as cellular networks and trunk radios.

The location of each field user – vehicle, person, machinery etc – is shown in simple text and displayed as icons on a computer map.

Radio Locate provides trip recording if required. This is enabled by the base operator.

Radio Locate can be upgraded to Data Over Radio Job Dispatch System when required.

Administering Radio Locate is easy to learn and intuitive to set up. New field users and other assets are added and removed quickly and easily. A unique ID for each field user is required.

Only Radio Locate software and GPS antenna/receiver connected directly to the radio are required for this solution. There is no need for dedicated devices, specific mobile equipment or other attachments. Radio Locate is simple and very fast to set up.

FEATURES

MAPPING

- Location/Address Find
- Editable Waypoints
- Display Vehicle on Map
- Replay Vehicle Trip
- Enable Personal Map shortcuts

TEXT MESSAGING

- Free format
- Canned text messages
- Status messages (In & Out)
- Alarm messages
- (Subject to radio type)

DURESS

- Portable or Vehicle activated
- Panic Button capability

FIELD USER ATTRIBUTES

- Field user ID
- Field user Status
- Field user Log On/Off

VEHICLE ATTRIBUTES

- Vehicle Details (COF REG etc)
- Vehicle Type (Van Car etc)
- Emergency Button

REPORTS

- Trip Reports

SUITABLE FOR:

- Event Security
- Emergency Services
- Search and Rescue
- Local Authorities

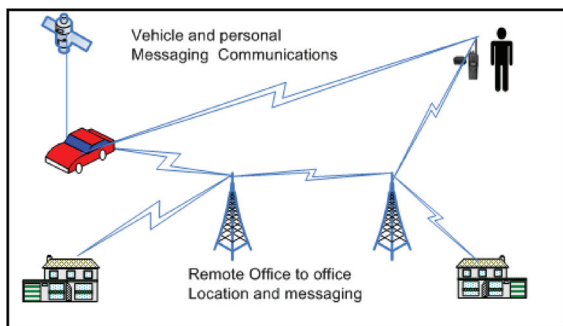
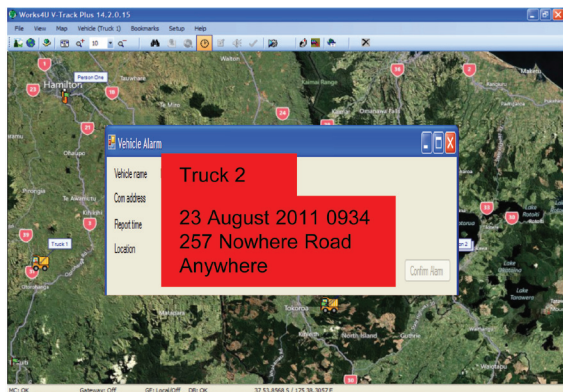
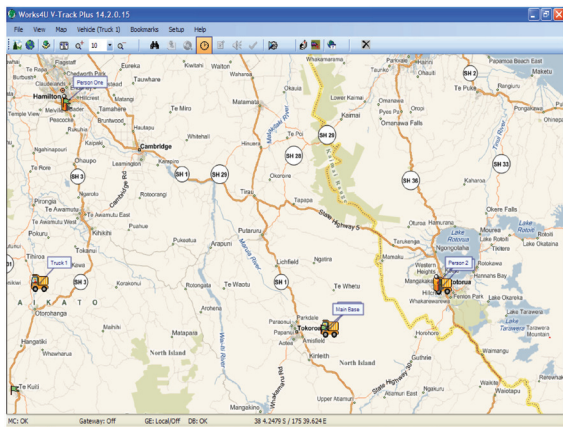
COMMUNICATIONS NETWORK

- Analogue Radio Repeater Network
- Digital Radio Repeater Network

VERSATILE

Digital and Analogue Radio Networks can be accessed simultaneously enabling cross network communications.

NEW METHODOLOGY ON RELIABLE TECHNOLOGY



Vehicle Summary				
Symbol	Name	Com Address	Gateway ID	User Default Gateway
	Person One	10.0.0.12	1	<input type="checkbox"/>
	Truck 1	10.0.0.11	1	<input type="checkbox"/>
	Truck 2	234	1	<input type="checkbox"/>
	Person 2	236	1	<input type="checkbox"/>
	Truck 3	222222	1	<input checked="" type="checkbox"/>

LOCATION

The field user can be located in a variety of ways such as –

- each time the microphone is used for speech
- each time a transmission is made from the radio
- at nominated intervals – auto polling
- on activation of the alarm switch

The radio location is displayed on a map which has comprehensive functionality. Data Over Radio has developed a mapping structure that allows the control centre to define areas using a grid system which highlights the areas pertaining to their operation. Designed primarily for remote areas of operation where there are few roads, the utilisation of the map grid system allows search and rescue teams (land and sea) to easily set grid searches in different colours and allocate resources as required to that area using the colour co-ordination features.

VEHICLE ALARM

When the Radio Locate alarm is activated by the field user, the signal is sent to the Data Over Radio Software via the radio network activating an audible alarm and visual alarm on the control center computer.

The highlighted message contains the date, time and location of the field user when the duress is activated.

The office administrator on setting up the alarm option can have either an audible alarm and/or visual indication to alert the controller/s to the alarm status. If enabled the Radio Locate software can generate an email, or SMS message to be sent to a predetermined address. Note the control center computer requires a connection to the Internet for SMS or emails to be sent.

RADIO OVER IP

Utilising the Internet or a companies WAN network, remote independent repeater sites can be accessed by Data Over Radio Gateway IP based software. With Digital radio networks being connected remotely via the Internet, locating remote field users and assets is easier. This is advantageous for the setting up of local command and control systems if required. If multiple radio gateways are in use then one message can be sent to all gateways at the same time. The Radio Locate software translates the message to match the appropriate radio protocol.

ADMINISTRATION

Adding, editing, or deleting field users is done in administration mode, not available to standard operators. Multiple Digital/Analogue radio networks can be accessed from the one control system with the addition of suitable radio networks. As each field user is added to the system, the radio gateway to be used is selected.